

CLASSES ONLY

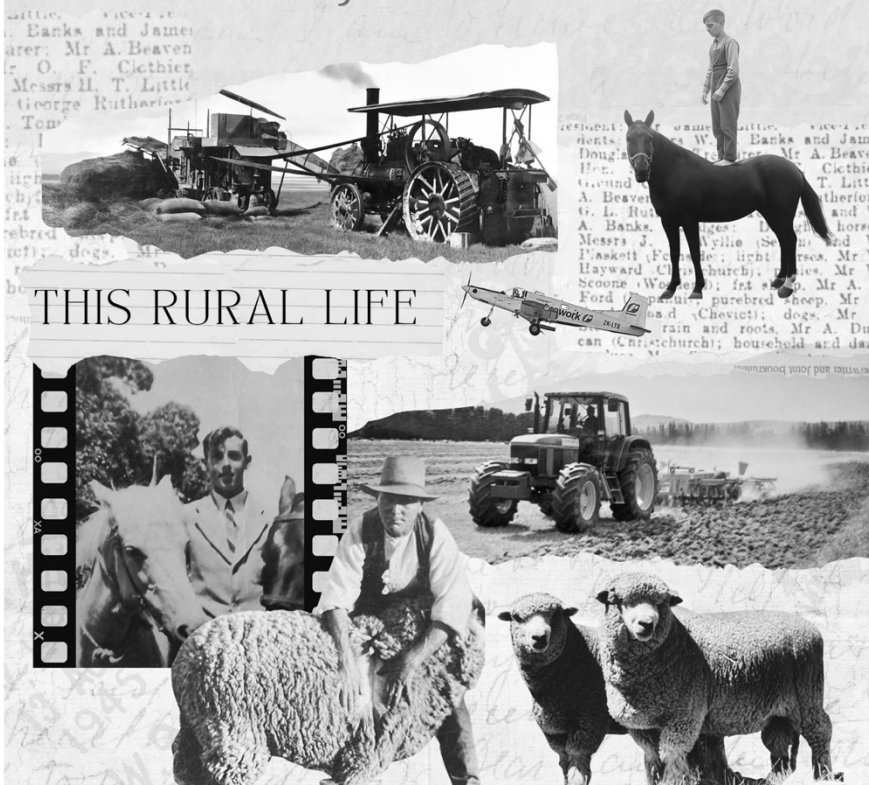
117th Annual Show



HAWARDEN
AGRICULTURAL & PASTORAL ASSOCIATION



Saturday 21st March 2026



SCHEDULE OF CLASSES

www.hawardenshow.co.nz

HORSES AND PONIES

Supervisor: Mrs Sam Wilson Ph: 03 314 4021 Cell: 027 410 4650

Entries received after 28 February 2026 won't have the entrant named in the catalogue. Please check sections for late penalties payable.

ALL HORSE SECTION PRIZE MONEY WILL BE PAID THROUGH ONLINE BANKING FOLLOWING THE SHOW. BANK ACCOUNT NUMBERS MUST BE ENTERED ON THE ENTRY FORM.

OVERNIGHT STAY: Anyone wishing to use our sale-yards the night before the Show, can do so by emailing the secretary, at a cost of \$5 per night. (Any damage will be charged to the owner, and you enter at your own risk).

No overnight camping of horses on the Show grounds allowed.

All horse droppings/hay/manure to be removed by owner on show day.

RULE BOOKS: For anyone wishing to purchase an RAS Equestrian Judges and Competitors Rule Book they are available from RAS Head Office. The order form is on the RAS website – ras.org.nz/equestrian section/Form page Product Order form.

GRAND PARADE: Prize winners are required to, and all other horses are welcome to parade.

CLEAN SPORT: The use of tranquilisers, stimulants, or any drug capable of affecting the performance of horses or ponies is forbidden.

Tests for forbidden substances may be carried out during the Show and testing of all animals is at the owner's risk. Testing is under the RAS Clean Sport Judiciary Committee procedures and rules.

HEIGHT RESTRICTIONS & RULES: The rider of any Horse or Pony shall not be changed for the duration of the section being judged. In all height classes, Horses may be entered in only one section.

ALL HORSES MUST CARRY A CURRENT R.A.S. HEIGHT CERTIFICATE. (Refer Rule CDA 1, RAS Rule Book).

ONLY DISTRICT COMPETITORS MAY BE MEASURED ON SHOW DAY - no exceptions. District Classes are restricted to Horses owned and ridden by persons residing between the Hurunui and Waipara Rivers.

No horse under 3 years of age is permitted to be shown under saddle at this Show.

NOVICE CLASSES: A Novice is a horse or pony that has not won six firsts in any saddle conformation classes at day of show. Competitors achieving six firsts at show day may transfer to open classes within entered section.

Novices to be shown in SNAFFLE BITS in Novice Classes.

Novice Champion Saddle Horse not eligible for Champion Saddle Horse.

Novices may enter the appropriate Novice classes for their wins, and any open classes.

NOVICE CHAMPION AND RESERVE to be judged from Hacks, Park Hacks, Saddle Hunters and Standardbreds. To be judged at the completion of novice classes.

Whips exceeding 76cm are not permitted in Show Classes.

Horses may be entered in one showing section only i.e. Park Hacks, Hacks, Standardbred and Saddle Hunters, but all may enter the working and walking saddle horse classes. No class will be held up for horses in another ring.

Horses must be named in each class entered.

RAS YELLOW/ RED CARD SYSTEM: This show supports the RAS "In-Line Resolution Process" system.

The President of the Show/Show Official/Committee Member and/or the Chief Steward of the Section/Stand may issue a yellow warning card and/or a red penalty/expulsion card, applicable as indicated in the RAS affiliated Show or Event own Rules and Regulations, to the Person Responsible (PR), in regards to (i) Abuse of animals, (ii) Inappropriate behaviour. Refer to <https://www.ras.org.nz/wp-content/uploads/2023/08/In-Line-Resolution-Process-Policy-2023.pdf> for full rules and implementation.

BACK NUMBERS: Breast plate number holders are encouraged. A number is required for each animal-rider-exhibitor combination in all classes (including led classes).

Hawarden A & P Association numbers at a cost of \$4 per entry are available to competitors. This will be refunded, if returned by 5pm on Show day.

HELMET STANDARD HATS and SAFETY HELMETS:

- a) In all cases current WorkSafe New Zealand rules prevail.
- b) All riders, including harness drivers/with the exclusion of heavy horse (Clydesdale) working classes, competing at RAS affiliated A&P Shows/Events must wear protective headgear, which includes a retaining harness secured to the shell at more than two points. Such headgear must be worn with the chinstrap properly adjusted and fastened when in the arena or ring, the practice area, collecting rings or anywhere else within a Showgrounds or the grounds of an affiliated Event. c) Hats/helmets must conform with one of the current approved safety standards. These standards may be subject to change, but the latest list can be found at <http://www.ras.org.nz> – equestrian. RAS will advise any changes via their website and Facebook.
- d) All hats/helmets that conform as per c) must be identified by the current tag system implemented by NZPCA, ESNZ and RAS.

GROUND FEE: A compulsory fee of \$10 per equine exhibitor to be included at time of entry.

TROPHIES:

The MARGARET SIDEY MEMORIAL CUP, donated by the late MR D. SIDEY & FAMILY, for most points Park Hack and Hunter Classes. District Classes excluded.

2025 Winner: Kerri Moffett - Matanui Rough Diamond

The MRS E.C. ANDERSON CHALLENGE CUP to the owner of the Champion Hack.

2025 Winner: Karen Withell - BV Minuet

The MR B.G. RUTHERFORD CHALLENGE CUP most points in the Hack and Saddle Hunter Classes, District Classes excluded.

2025 Winner: Kerri Moffett – Matanui Rough Diamond

"HAVN" CHALLENGE SALVER donated by MR & MRS P.J. LAMB for the Supreme Champion Saddle Horse.

2025 Winner: Karen Withell - BV Minuet

R C OVERTON – CHAMPION PARK HACK donated by Est. of RC Overton

2025 Winner: Eliza Dalzell – Sweet Coruba

FREEMAN BOOKER MEMORIAL TROPHY presented to the Champion Standardbred Horse kindly donated by Jan Henderson (nee Booker) 2025 Winner: Celine Fletcher – Grey's the Great

IAN FERGUSON MEMORIAL CHALLENGE TROPHY presented for most points in Hack Showjumping 2025 Winner: Jayden White - Raspberry Xtreme

Kristal Merry Photography is our equestrian photographer. Horse and pony photos taken on the day are able to be viewed on her website; www.kristalmerryphotography.co.nz

LIGHT HORSES

ENTRY FEE: Members \$5, Non-members \$7. (unless otherwise stated - see section)

PRIZES: First \$20, Second \$15, Third \$10, Fourth \$5. (unless otherwise stated - see section)

The Committee reserves the right to combine or cancel classes due to insufficient numbers.

HACKS

Ring 2

Judging commences at 8.00am

The rider of any Horse shall not be changed for the duration of the class being judged.

The Mrs C.E. Anderson Challenge Cup to the owner of the Champion Hack.

Havn Challenge Salver awarded to the Supreme Champion Saddle Horse

BG Rutherford Challenge Cup for the most points in the Hack and Hunter Classes, District Classes excluded.

R C Overton – Champion Park Hack donated by Estate of RC Overton.

Class 1 District (Hack, Park Hack, Standardbred and Saddle Hunter)

Class 2 Best on Parade (Hack or Park Hack)

Class 3 Best Rider on a Hack or Park Hack

Class 4 Novice Hack or Park Hack - 0 to 5 wins

Simple snaffle bits only

Class 5 Lady's Hack over 158cm (to be ridden by Lady or Gent)

Class 6 Open Hack 158-163cm

Class 7 Open Hack over 163cm

Champion Hack

Reserve Champion Hack

Class 8 Open Park Hack 148 - 153cm

Class 9 Open Park Hack 153 - 158cm

Champion Park Hack

Reserve Champion Park Hack

Class 10 Best Paced Hack or Park Hack over 148cm

Class 11 Best Mannered Hack or Park Hack over 148cm

Class 12 NZTR Thoroughbred Series

NZTR Thoroughbred A&P Show Series LATE ENTRIES RECEIVED AFTER 28/2/2026 WILL INCUR A 50% SURCHARGE.

- Thoroughbred horse - registered in any recognised Thoroughbred Stud Book, either in NZ or overseas.
- Sire and Dam of Thoroughbred - must be listed at time of entry. If not listed, then the entry will not be accepted at the Show/Event.

Prize Money – 1st \$100, 2nd \$50, 3rd \$30, 4th \$20 will be awarded if 4 or more entries are in the class at close of entry date. 3 entries or less – no prize money awarded.

Ribbons – Awarded to fourth place.

Series Winner 2025.2026 – will be announced at HOY 2026.

Judging: 80% Conformation, 20% Paces & Manners.

- Horses to show a good Walk and where space allows, a Gallop.
- Ridden horses must exhibit true thoroughbred characteristics throughout.
- Judge then to assess each horse individually with saddles removed. Note: For walking Hack see Saddle Hunter section.

STANDARDBREDS

Ring 3

Judging to commence approximately 10.00 am after the conclusion of Hacks / Park Hacks

Standardbred horses must carry the approved record card to record wins

Freeman Booker Memorial Trophy presented to the Champion Standardbred Horse kindly donated by Jan Henderson (nee Booker).

Class 13 Best Rider on Standardbred

Class 14 Novice Ridden Standardbred: 0-5 wins

Simple snaffle bits only

Class 15 Open Ridden Standardbred

Champion Standardbred

Reserve Champion Standardbred

Class 16 Best Standardbred Most Suitable for a Lady

Class 17 Best Paced & Mannered Standardbred

Class 18 Best Walking Ridden Standardbred

Winner of novice class eligible for Champion / Reserve novice horse.
To be judged at the completion of novice classes.

SADDLE HUNTER

Ring 1

Judging Commences 8.00am

Class 19 Best On Parade

Class 20 Best Rider on a Saddle Hunter

Class 21 Novice Saddle Hunter 0 to 5 wins

Simple snaffle bits only

Class 22 Gentleman's Saddle Hunter to be ridden by Lady or Gent

Class 23 Open Saddle Hunter over 148-163cm

Class 24 Open Saddle Hunter over 163cm

Champion Saddle Hunter

Reserve Champion Saddle Hunter

Class 25 Best Paced Saddle Hunter

Class 26 Best Mannered Saddle Hunter

Class 27 Walking Saddle Horse

Open to Park Hack, Hack, Standardbred & Saddle Hunter

Class 28 Best type of Working Hunter on the flat

When entering this class, refer to Class 74 in your entry.

STOCK & STATION HORSE

Marshal: Sam Wilson phone 03 314 4021 Cell 027 410 4650

Judging commences at 8.15am

Entry Fee: Members \$5, Non-members \$7

Prize money: First \$20, Second \$15, Third \$10, Fourth \$5 (unless otherwise stated - see section)

Late entries will be accepted but won't be in catalogue if received after February 28. 50% penalty for late entries.

Craigs Investment Partners Challenge Trophy (awarded to rider/horse gaining most points over Northern Stock Horse Circuit. (Kaikoura/Amuri/Cheviot/Hawarden)

2025 Winner: Rebecca Howell – Anchorbart Valray

Trophy - Fox Hunting NZ - J Thacker most points on the day.

2025 Winner: Rebecca Howell – Anchorbar Valray

Sponsors: Alpine Safaris sponsorship - \$100 for most points in the Stock Horse District Circuit
Classes 31, 33, 35, 36 and 37 points counted towards circuit competition.

Circuit Points: 1st=6, 2nd=5, 3rd=4, 4th=3, 5th=2, 6th=1

Northern Stock Horse Circuit Final Judging Presentation will be presented at the completion of the Barrel Race.

All riders U17 must wear safety helmets in accordance with RAS rules. The Hawarden A & P Association recommends that hard hats be worn by all competitors. No responsibility will be accepted for any injury to those not wearing safety approved helmets.

Stock and Station horses, gear and rider turnout to be tidy and appropriate for riding in SHOW conditions.

Inhumane equipment or training aids are prohibited and the judge and stewards have the right to inspect all tack including the bit.

Horse/pony to be of a size and type capable of carrying a rider and gear, all day, over all terrain, at all paces.

A sash and certificate will be presented to the Champion and Reserve Champion Stock Horse (calculated on points from classes 31, 33, 35, 36 and 37).

The Committee reserves the right to enforce RAS rules where appropriate.

Classes will not be held up for riders competing in other sections. One horse/rider combination.

Class 29 Pack Horse (led)

Class 30 District Ridden Stock Horse

Class 31 Ridden Stock Horse

Class 32 Walking Horse

Class 33 Riding Pattern

Pattern to be posted on Show Day morning.

Class 34 Obstacle Course

Course to be posted on Show Day morning

Class 35 Combination Obstacle Course - Timed event

Course to be posted on Show Day morning

Class 36 Calf Tie (dummy calf)

Class 37 Open Barrel Race

Senior Champion Stock and Station

Junior Champion Stock and Station 18 yrs and under

Reserve Senior Champion Stock and Station

Reserve Junior Champion Stock and Station

PONIES

Grand Parade: Prize winners are required to, and all others are welcome to parade.

The rider of any Horse or Pony shall not be changed for the duration of the class being judged.

Pony Height Certificates and Performance Cards must be carried in Rings A, B, C & D. Failure to do so will result in elimination.

ONLY DISTRICT COMPETITORS MAY BE MEASURED ON THE DAY

District Classes are for Ponies, owned and ridden by persons residing between the Hurunui and Waipara Rivers.

In all SADDLE Classes for Ponies up to 148cm, Pony to be ridden by boy or girl under seventeen (17) years at 1st August 2025.

No Pony under the age of three years is permitted to be shown under saddle at this Show. Novice Classes: A Novice is a horse or pony that has not won six firsts in any saddle conformation classes at day of show. Competitors achieving six firsts at show day may transfer to open classes within entered section. Novices to be shown in SNAFFLE BITS in Novice Classes. Novice Champions not eligible for Champion Saddle Pony. Novices may enter the appropriate Novice classes, and any open classes.

Champion and Reserve Champion Novice to be judged from Group A, B, C & D Rings.

Whips exceeding 76cm are not permitted in Show Classes.

Timpendean Challenge Cup presented by MRS & the late MR C.H. BETHELL for Supreme Champion Saddle Pony.

2025 Winner: Stella Schouten - Eastdale Liberty

The Fraser Family Challenge Cup for the Champion District Pony.

2025 Winner: Billie Ramsey – It's Cookie Time

Wee Gaiety Cup, presented by the late MRS A.G. BLACK, for Pony not over 148cm. for most points in Saddle, and Jumping. Novice and District Classes excluded. To be won three times in succession or five times at intervals.

2025 Winner: Annabelle Bertie - Eastdale Imogen

ENTRY FEE: GROUPS A, B, C, D, First Ridden and Leading Rein: Members \$5 Non-members \$7

PRIZES: 1st \$15 2nd \$10 3rd \$8 4th \$5

GROUP A/B/C RIDDEN PONY SECTION COMBINED

Judging commences 8.00 a.m.

To be judged for the following - Suitability of Mount for Pony Club Rider, manners of Pony, care and correct fitting of tack, care and correct turnout of Pony, rider's ability. Ridden in a Snaffle. Sponsors

The Supreme Champion Pony receives a hay bag kindly donated by M G Cooper Contracting.

Class 39 District Pony up to 148cm

Fraser Family Challenge Cup

Class 40 Best on Parade up to 148cm

Class 41 Novice Show Pony 0-5 wins up to 148cm

Simple snaffle bits only

Winner of novice class eligible for champion/reserve novice pony. To be judged at the completion of novice classes.

Class 42 Open Show Pony under 123cm (Group C)

Class 43 Open Show Pony 123- 128cm (Group C)

Champion Group C Pony

Reserve Champion Group C Pony

Class 44 Open Show Pony 128-133cm (Group B)

Class 45 Open Show Pony 133 - 138cm (Group B)

Champion Group B Pony

Reserve Champion Group B Pony

Class 46 Open Show Pony 138-143cm (Group A)

Class 47 Open Show Pony 143-148cm (Group A)

Champion Group A Pony

Reserve Champion Group A Pony

Class 48 Best Paced Show Pony up to 148cm

Class 49 Best Mannered Show Pony up to 148cm

Class 50 Dry Mare

Class 51 Best Rider - under 17 years

Class 52 Pony Breeders up to 148cm

Ponies must be registered with Pony Breeders of NZ Society.

If it is subsequently found that the winner of a Pony Breeders Society sash is not registered with the Society, they will be required to forfeit this award.

Judged on 60% confirmation, and 40% paces, manners and ability.

Please quote Registered Number

GROUP D PONY / SADDLE HUNTER PONY

Judging commences 8.00am

Saddle Hunters not over 148cm

Class 53 District Saddle Hunter Pony

Class 54 Best On Parade

Class 55 Novice Saddle Hunter Pony 0-5 wins

Simple snaffle bits only.

Winner of novice class eligible for champion/reserve novice pony. To be judged at the completion of novice classes.

Class 56 Open Saddle Hunter Pony not over 138cm

Class 57 Open Saddle Hunter Pony over 138-148cm

Champion Saddle Hunter Pony

Reserve Champion Saddle Hunter Pony

Class 58 Best Paced Saddle Hunter Pony not over 148cm

Class 59 Best mannered Saddle Hunter Pony not over 148cm

Class 60 Best Rider on a Saddle Hunter under 17 years

Supreme Champion Novice from Group A,B,C and D

Supreme Champion Pony

FIRST RIDDEN

Judging commences 8.00am

Riders to be under 10 years of age as at 1st August 2025. Ponies not to be over 138cm. No cantering is allowed as a class. However, the Judge may ask for a canter in the individual workouts. A cane or whip not exceeding 76cm in length with a flap 2cm by 4cm may be

carried. Riders are only eligible to compete in the First Ridden section after riding for no more than 24 months from the date of the first Show in this Section (RAS Rule 57).

Good manners and willingness of the pony and degree of control of the rider will be taken into account.

Ponies may compete in Leading Rein and First Ridden, but NOT with the same rider.

Ponies to be judged on suitability and safeness (60%), confirmation and paces (40%).

Sponsors

Riverview Partnership donate a hay bag for the Supreme Champion First Ridden / Led Rein

Class 61 District Pony under 138cm

Class 62 Best on Parade First Ridden

Grooming, condition and cleanliness of saddlery, dress of rider and general appearance to be considered.

Class 63 Novice First Ridden Pony not over 138cm (conformation class): 0-5 wins

Winner of novice class eligible for Champion / Reserve novice pony.

Class 64 Open First Ridden Pony not over 128cm (conformation class)

Class 65 Open First Ridden over 128cm and not over 138cm (conformation class)

Champion First Ridden

Reserve Champion First Ridden

Class 66 Best Paced and Mannered First Ridden Pony not over

138cm Class 67 Best Rider under 10 years Not eligible for other riding classes.

Restricted to first ridden competitors.

LEAD REIN

Lead Rein champion is not eligible for Saddle Pony Championship

The rider of any Horse or pony shall not be changed for the duration of the class being judged.

Riders in this section must not enter any other sections, but a Pony can. Pony to be not over

128cm. Riders must be 7 years of age and not under 4 years in Lead Rein as at 1st August 2025.

Ponies to be led by an adult with leading rein attached to the noseband of a snaffle bridle. Ponies will be asked to walk and trot. NO CANTERING. Running or bearing reins or similar tackle are not allowed.

Sponsors: Riverview Partnership donate a hay bag for the Supreme Champion First Ridden/Led Rein

Supreme Champion First Ridden / Led Rein and Supreme Pony to be judged from Champion of each section.

Class 68 District Lead Rein

Class 69 Best on Parade (leader, Pony, Rider)

Grooming, condition and cleanliness of saddlery, dress of rider and general appearance to be considered.

Class 70 Lead Rein best pony open under 123cm
Class 71 Lead Rein best pony open 123-128 cm
Supreme Champion Led Rein / First Ridden Pony
Champion Lead Rein
Reserve Champion Lead Rein
Class 72 Best Paced & Mannered Lead Rein Pony
Class 73 Best Rider 7 years and under.

HUNTERS

Jumping commences at approximately 10.30am
ENTRY FEE: Please see class for entry fee.
PRIZES: Please see class for prizes.
Mr P.M. Crean Challenge Cup for the Champion Hunter.
2025 Winner: Sarah Morris – Montalto

Horses may enter in only one height class.
Please note: All riders are expected to ride in catalogue order unless arranged prior with gate steward.

Class 74 Best Type of Working Hunter will be called on to jump
Will be judged in the Saddle Hunter ring at the completion of flat classes. (see class 28)
Starting time approximately 10.00am.
ENTRY FEE: Members \$6, Non-Members \$8
PRIZES: First \$40, Second \$30, Third \$20, Fourth \$10

Class 75 Novice Hunter, over fences 0-2 Wins No
Wire Jump
Entry Fee: Members \$7, Non-Members \$9
PRIZES: First \$50, Second \$30, Third \$25, Fourth \$20

Class 76 Light Weight Hunter over fences
ENTRY FEE: Members \$7, Non-members \$9
PRIZES: First \$80, Second \$50, Third \$30, Fourth \$20

Class 77 Heavy Weight Hunter over fences
Entry Fee: Members \$7, Non-members \$9
PRIZES: First \$80, Second \$50, Third \$30, Fourth \$20

Class 78 Open Hunter over fences
Includes a wire fence.
ENTRY FEE: Members \$10, Non-members \$12
PRIZES: First \$150, Second \$75, Third \$50, Fourth \$30, Fifth \$20

Champion Hunter
Reserve Champion Hunter

PONY HUNTER

Judging commences approximately 10.30am

ENTRY FEE: Members \$5 Non-members \$7

PRIZES: First \$25, Second \$20, Third \$10

The rider of any Horse or pony shall not be changed for the duration of the class being judged.

Class 79 District Pony Hunter up to 148cm

Owned and ridden by a person residing between the Hurunui and Waipara Rivers. Class 80 Novice Pony Hunter up to 148cm 0 - 2 wins No wire jump.

Class 81 Open Pony Hunter over fences, not over 138cm

Class 82 Open Pony Hunter over fences 138 - 148cm (Not over)

Includes a wire fence

Champion Pony Hunter
Reserve Champion Pony Hunter

SHOW JUMPING HORSES

Show Jumping commences at 9.00am.

Please note: Show Jumping IS NOT RUN under ESNZ rules thus horses/ponies do not need to be registered. Show Jumping is run under NZPCA rules.

The rider of any Horse or pony shall not be changed for the duration of the class being judged.

Horses may only compete in three Show Jumping Classes.

Please note: All riders are expected to ride in catalogue order unless arranged prior with gate steward.

Late entries will be required to ride first.

LATE ENTRIES RECEIVED AFTER 28/2/2026 WILL INCUR A 50% SURCHARGE

ENTRY FEE: Members \$8, Non-members \$10 (unless otherwise stated - see section)

PRIZES: First \$60, Second \$40, Third \$20 (unless otherwise stated - see section)

Ian Ferguson Memorial Challenge Trophy most points in the Hack Show Jumping (Excludes Show Cross)

2025 Winner: Jayden White -Raspberry Xtreme

Craigs Investment Hack Showcross

2025 Winner: Annabelle Jones – Braxton Boy

Class 83 T.A.M. 2 Height 80cm

Class 84 T.A.M. 2 Height 95cm

Class 85 T.A.M. 2 Height 1.10cm

Class 86 T.A.M. 5 I.J.O. Height 80cm

Class 87 T.A.M. 5 I.J.O. Height 95cm

Class 88 T.A.M. 5 I.J.O. Height 1.10cm

Ian Ferguson Memorial Challenge Trophy

Class 89 Craigs Investment Hack Showcross 90cm - 1.10m

ENTRY FEE: Members \$10, Non-members \$12 (entries may be taken on the day but will incur a 50% surcharge)

PRIZES: First \$300 + Dress rug, Second \$200, Third \$100, Fourth \$60, Fifth \$40

SHOW JUMPING PONIES

Approximate Start Time: 12 noon

Please note: Show Jumping IS NOT RUN under ESNZ rules thus horses/ponies do not need to be registered. Show Jumping is run under NZPCA rules.

The rider of any Horse or pony shall not be changed for the duration of the class being judged.

Pony Height is restricted to 148cm

LATE ENTRIES RECEIVED AFTER 28/2/2026 WILL INCUR A 50% SURCHARGE

Ponies entering in Open Classes not eligible for restricted height.

Craigs Investment Partners Pony Showcross

2025 Winner: Georgia Grant – Coco

Class 90 Pony T.A.M. 5. 50cm

Entry Fee: Members \$3, Non members \$5

Prizes: Ribbons only. Double clear First Equal.

Class 91 Pony T.A.M. 5. I.J.O. 85cm

Entry Fee: Members \$6, Non members \$8

Prizes: First \$30, Second \$20, Third \$10

Class 92 Pony T.A.M. 5. I.J.O. 1.0metre

Entry Fee: Members \$6, Non members \$8

Prizes: First \$30, Second \$20, Third \$10

Class 93 Pony T.A.M. 2 Height 1.0metre

Entry Fee: Members \$6, Non members \$8

Prizes: First \$30, Second \$20, Third \$10

Class 94 Pony T.A.M. 2 Height 85cm

Entry Fee: Members \$6, Non members \$8

Prizes: First \$30, Second \$20, Third \$10

Class 95 Craigs Investment Pony Showcross Height 95cm-1.0m

Entry Fee: Members \$8, Non members \$10

Prizes: First \$100 + Dress rug, Second \$80, Third \$60 Fourth \$40 Fifth \$20.

Entries may be taken on the day.

SHEEP

Hawarden A & P is proud to be presenting the Sheep and Wool Section. All sections are run under the by-laws and regulations of the Hawarden A&P show Association.

Supervisor: Andy Sidey 027-262-4399, Stu Jensen 03-314-4581.

Morning tea will be provided and thanks to PGG Wrightsons for providing a BBQ after judging. SHEEP TO BE PENNED NO LATER THAN 8.30am. JUDGING COMMENCES 9.00am. All sheep must be entered in the name of bona fide owner or owners and must be from a Registered Flock.

The original breeders name must be stated where there has been a change of ownership of a registered flock of the same breed as the sheep being entered.

All sheep entered in the Breed Classes must be entered in the recognised Flock Book or the Dam and Sire must be eligible for the Flock Book.

All sheep must be Brucellosis accredited. Brucellosis certificates to be produced on request.

No stud breeders selling Rams on a commercial basis can enter in the Flock section. Lamb Classes - No Lamb to be born before 1st July in the year prior to the show.

All entry fees must be paid at the time of entry. This rule will be strictly enforced.

All sheep to be shown in Natural Condition where stated.

Natural Condition to mean:

That the wool has not been trimmed in any way except crutching or dagging.

That there has not been any colouring, oiling or locking other than dipping.

That the Sheep have not been housed, rugged or covered in any way since last shearing and must be fairly shorn.

Judges will be instructed to disqualify all sheep which they consider unfairly shorn or excessively trimmed or excessively coloured, also sheep on which any adhesive substance, string or other material has been used for the purpose of concealing or altering any defect in the fleece or form of the sheep.

Exhibitors are reminded that the use of Bloom Dip or any artificial colouring is now covered by Government Regulation.

In all breed sections the Ram and Ewe will be judged - Champion, Reserve Champion and Supreme Champion.

Champion Ram / Ewe

Reserve Champion Ram / Ewe

SUPREME OVERALL EXHIBIT / ANIMAL

Entry Fees:

Members \$4.00, Non-members \$5.00

Entries close 28th February 2026

PRIZES and AWARDS

NORTH CANTERBURY VETS CHAMPION PUREBRED RAM LAMB AND EWE LAMB - MEAT BREED -

From all first place ram lambs and ewe lambs in the purebred sections. A ribbon and Prize in the form of product to be presented on the day.

YALDHURST WOOLS LTD award a Prize and a Ribbon for CHAMPION PUREBREED RAM LAMB AND EWE LAMB - WOOL BREED.

ALL SHEEP SECTION PRIZE MONEY WILL BE PAID ONLINE FOLLOWING THE SHOW. BANK A/C DETAILS to be given on the entry form. INTERBREED JUDGING - 12 Midday sharp.

Breeds to be represented by one nomination each, selected by Breed Judge (or Judges). To be judged by 3 judges on the individual card system.

ASB BANK SUPREME CHAMPION SHEEP OF THE SHOW Sponsored by ASB BANK to the value of \$150

ASB BEST MEAT BREED EXHIBIT - Prize \$100 plus ribbon.

ASB BEST WOOL BREED EXHIBIT - Prize \$100 plus ribbon.

Thank you to our sponsors:

ASB Bank, North Canterbury Vets,

Yaldhurst Wools, Rural Livestock,

Colliers Rural and Agribusiness Sales

PGG Wrightson Real Estate, Mayfair Texels,

Silver Fern Farms, Andrew Sidey, Vetpak, M R Wools, Donaghys.

SHEEP BREEDS

Prizes: First \$25, Second \$15, Third \$10 unless stated otherwise.

NO COVERING of any exhibits permitted.

SPECIAL SHEARING CONDITIONS as adopted by the Canterbury A&P Association.

CORRIEDALE

PGG CHAMPION CUP - for the Champion Corriedale Ram, to be won three years in succession or four years at intervals.

OG EVANS CHALLENGE CUP to the Best Corriedale Ram Lamb to be selected by the Judge from entries pre-selected classes

HCA SIDEY Challenge Trophy -for the Champion Corriedale Ewe.

KARU CHALLENGE CUP - for the best Corriedale Ewe Lamb (formally the HL Pickering Challenge Trophy)

HT LITTLE MEMORIAL CUP - for most points in Corriedale section

Class 115 Ram, two shear and over. November shorn

Class 116 Ram, two shear and over. July shorn

Class 117 Ram, one shear. November shorn

Class 118 Ram, one shear. July shorn

Class 119 Ram Lamb

Champion Corriedale Ram

Reserve Champion Corriedale Ram

Class 120 Ewe, five shear and over

Class 121 Ewe, two shear and over

Class 122 Ewe, one shear

Class 123 Ewe Lamb

Champion Corriedale Ewe

Reserve Champion Corriedale Ewe

Supreme Champion Corriedale Sheep

MERINO / POLL MERINO

Class 124 Ram, one shear and over

Champion Merino/Poll Ram

Reserve Champion Merino/Poll Ram

Class 125 Ewe, two shear and over

Class 126 Ewe, one shear

Champion Merino/Poll Ewe

Reserve Champion Merino/Poll Ewe

Supreme Champion Merino/Poll

PERENDALE

Class 127 Ram, one shear and over

Class 128 Ram Lamb.

Champion Perendale Ram

Reserve Champion Perendale Ram

Class 129 Ewe, two shear and over

Class 130 Ewe, one shear

Class 131 Ewe Lamb

Champion Perendale Ewe

Reserve Champion Perendale Ewe

Supreme Champion Perendale

ROMNEY

Class 132 Ram over 18 Months

Class 133 Ram Lamb shorn

Champion Romney Ram

Reserve Champion Romney Ram

Class 134 Ewe, two shear and over

Class 135 Ewe, one shear

Class 136 Ewe Lamb, shorn

Champion Romney Ewe

Reserve Champion Romney Ewe

Supreme Champion Romney

TEXEL - Feature show

Sponsor: M R Wools

Class 137 Ram, two shear and over

Class 138 Ram, one shear

Class 139 Shorn Ram Lamb

Champion Texel Ram - \$50

Reserve Champion Texel Ram

Class 140 Ewe, two shear and over

Class 141 Ewe, one shear

Class 142 Shorn Ewe Lamb

Champion Texel Ewe - \$50

Reserve Champion Texel Ewe

Supreme Texel - \$100

SOUTH SUFFOLK

WOODFORD CUP to the exhibitor gaining most points in the South Suffolk section.

Class 143 Ram, one shear and over

Class 144 Ram Lamb

Champion South Suffolk Ram

Reserve Champion South Suffolk Ram

Class 145 Ewe, two shear and over

Class 146 Ewe, one shear

Class 147 Ewe Lamb

Champion South Suffolk Ewe

Reserve Champion South Suffolk Ewe

Supreme Champion South Suffolk

SUFFOLK

Class 148 Ram, one shear and over

Class 149 Ram Lamb

Champion Suffolk Ram

Reserve Champion Suffolk Ram

Class 150 Ewe, two shear and over.

Class 151 Ewe, one shear

Class 152 Ewe Lamb

Champion Suffolk Ewe

Reserve Champion Suffolk Ewe

Supreme Champion Suffolk

OXFORD

Class 153 Ram, one shear and over

Class 154 Ram Lamb
Champion Oxford Ram
Reserve Champion Oxford Ram
Class 155 Ewe, two shear and over
Class 156 Ewe, one shear
Class 157 Ewe Lamb
Champion Oxford Ewe
Reserve Champion Oxford Ewe
Supreme Champion Oxford

DORSET DOWN

GLC DUNSTER CHALLENGE CUP for the most points in the Dorset Down section

Class 158 Ram, one shear and over
Class 159 Ram Lamb
Class 160 Shorn Ram Lamb
Champion Dorset Down Ram
Reserve Champion Dorset Down Ram
Class 161 Ewe, two shear and over
Class 162 Ewe, one shear
Class 163 Ewe Lamb
Class 164 Shorn Ewe Lamb
Champion Dorset Down Ewe
Reserve Champion Dorset Down Ewe
Supreme Dorset Down

POLL DORSET

COLENZO CHALLENGE CUP for the best group of sheep

WC ADAMS CUP for the exhibitor gaining the most points in this section.

Class 165 Ram, one shear and over
Class 166 Ram Lamb
Champion Poll Dorset Ram
Reserve Champion Poll Dorset Ram
Class 167 Ewe, two shear and over
Class 168 Ewe, one shear
Class 169 Ewe Lamb
Champion Poll Dorset Ewe
Reserve Champion Poll Dorset Ewe
Supreme Champion Poll Dorset
Class 170 Group exhibit, consisting of four sheep

SOUTHDOWN

Class 171 Ram, one shear and over
Class 172 Ram Lamb
Champion Southdown Ram
Reserve Champion Southdown Ram
Class 173 Ewe, two shear and over
Class 174 Ewe, one shear
Class 175 Ewe Lamb
Champion Southdown Ewe
Reserve Champion Southdown Ewe
Supreme Champion Southdown Sheep

HAMPSHIRE

Class 176 Ram, One shear and over
Class 177 Ram Lamb
Champion Hampshire Ram
Reserve Champion Hampshire Ram
Class 178 Ewe, two shear and over
Class 179 Ewe, One shear
Class 180 Ewe Lamb
Champion Hampshire Ewe
Reserve Champion Hampshire Ewe
Supreme Champion Hampshire

HALFBRED/SAMM

P & B INKSON / JOE INKSON MEMORIAL CHALLENGE CUP for the best headed Halfbred Ram
HAWARDEN GARAGE AND TRANSPORT CHALLENGE CUP for the most points in the Halfbred section
Sheep to be presented in Natural condition.
Class 181 Ram, one shear and over
Class 182 Ram Lamb
Champion Halfbred/Polwarth Ram
Reserve Champion Halfbred/Polwarth Ram
P & B Inkson / Joe Inkson Memorial Challenge Cup
Class 183 Ewe, two shear and over
Class 184 Ewe, one shear
Class 185 Ewe Lamb
Champion Halfbred/Polwarth Ewe
Reserve Champion Halfbred/Polwarth Ewe
Supreme Champion Halfbred/Polwarth

VALAIS BLACKNOSE

Class 186 Ram, two shear and over
Class 187 Ram, one shear
Class 188 Ram Lamb
Champion Valais Blacknose Ram
Reserve Champion Valais Blacknose Ram
Champion Valais Blacknose Ram Lamb
Class 189 Ewe, two shear and over
Class 190 Ewe, one shear
Class 191 Ewe Lamb
Champion Valais Blacknose Ewe
Reserve Champion Valais Blacknose Ewe
Supreme Champion Valais Blacknose

OTHER BREEDS

Any registered purebred sheep breed not already included in the schedule.
Class 192 Ram, one shear and over
Class 193 Ram Lamb
Class 194 Ewe, two shear and over
Class 195 Ewe, one shear
Class 196 Ewe Lamb

BLACK and COLOURED SHEEP

Marshal: Hamish Hartnell, phone 314 4317.
Entry Fee Members \$4.00, Non-members \$5.00.
Note: Entries after 28th February 2026 will NOT be Accepted
Judging commences 9.00am
Fine Breed Types, Strong Breed Types
All sheep must be Brucellosis accredited and Brucellosis certificates to be produced on request. All sheep must be presented in NATURAL CONDITION PRIZES:
First \$25, Second \$15, Third \$10.
BEV FORRESTER BEST RAM LAMB - Wool - \$10
BEV FORRESTER BEST EWE LAMB - Wool - \$10
MR & MRS A STEWART CHALLENGE CUP for most points in Coloured or Black Sheep classes.

Class 210 Ram Mature, any breed.
Class 211 Ram Lamb Fine Wool Breed types.
Class 212 Ram Lamb Strong Wool Breed types.
Champion Black and Coloured Ram
Reserve Champion Black and Coloured Ram
Class 213 Ewe Lamb Fine Wool Breed types.
Class 214 Ewe Lamb Strong Wool Breed types.
Class 215 Two-tooth Ewe Fine Wool Breed types. Natural Condition.

Class 216 Two-tooth Ewe Strong Wool Breed types.

Class 217 Ewe Mature Fine Wool Breed types.

Class 218 Ewe Mature Strong Wool Breed types.

Champion Black and Coloured Ewe

Reserve Champion Black and Coloured Ewe

Supreme Champion Black and Coloured

FARMERS BREEDING EWES AND YFC CLASSES

Entry Fee: Members \$4.00, Non-members \$5.00.

All Sheep in this section must be exhibited in a natural condition.

Length of wool is not to be taken into consideration for judging purposes To be eligible for Y.F.C. Trophies, competitors must be bona fide Y.F.C. Members.

Prizes: In all Sheep Classes:

First \$10, Second \$5, Third \$3 (seven or more entries)

PRENDEVILLE CARRYING CO LTD CUP for most points in Farmers Breeding Ewes section. RB

KELLOCK MEMORIAL TROPHY for the most outstanding exhibit in Farmers Breeding Ewes and YFC classes.

Class 220 Ewe, one shear Class

221 Pair of Ewes, one shear.

Class 222 Ewe Lamb.

Class 223 Pair of Ewe Lambs.

PET SHEEP

Marshal: Pieta Sidey

No entry fee

Entries will be accepted on the day.

Prizes: First \$15, Second \$10, Third \$5

Class 225 Pet Sheep - Exhibitor 8 years and under

Class 226 Pet Sheep - Exhibitor 9 years and over

PRIME SHEEP

Marshal: Mark Zino

NO ENTRY FEE

Any breed of lamb most suitable for export precut lamb trade.

SPECIAL SPOT PRIZE DRAW - Great prizes drawn on the day.

Lambs under 15kg carcass weight (34kg live weight) will not be eligible for the prize draw.

Lambs will be weighed and tagged after collection.

Individual carcass weight and grade information will be available, post processing by Silver Fern Farms.

To be judged on hoof and hook.

RSA CHALLENGE SHIELD for the most points in the Prime Sheep Section.

Thanks to our sponsor Silver Fern Farms and Shearwell Data.

Proceeds of all lambs entered in gift lamb class become the property of the Association.

Class 227 Gift Lamb

Meat Breeds - 1st \$25 - 2nd \$15 - 3rd \$10

Wool Breeds - 1st \$25 - 2nd \$15 - 3rd \$10

On the Hook - 1st \$30 - 2nd \$20 - 3rd \$10

ALL BREEDS RAM LAMB

All Breeds Ram Lambs to be judged on their ability to create commercial return.

Prizes: First \$25.00 Second \$15.00 Third \$10.00 Unless stated otherwise.

Class 228 Purebred Ram Lamb.

Terminal Sire Breeds

Class 229 Purebred Ram Lamb. Dual purpose breeds

Andrew Sidey sponsors this class. Prizes: 1st \$40, 2nd \$25, 3rd \$15, 4th \$10, 5th \$10.

Class 230 First X Ram Lamb the progeny of two registered dual-purpose or wool breeds.

Class 231 First X Ram Lamb. The progeny of two registered sire meat breeds.

EXHIBITION ONLY

The Hawarden A & P Association invite breeders to display their stock in a non-competitive situation.

Sheep may be of any breed or cross and will be penned within the area of our normal sheep section. Information boards are welcome but must not exceed 300mm above the top rail of the allocated pen.

PEN CHARGE - \$5.00 per pen.

Class 232 Exhibition Only Class

WOOL

Entry Fees: Members \$2.00. Non-members \$3.00

No late entries accepted.

Entries close 28 February 2026.

Judging commences 9.30 a.m.

All fleeces must be sent in skirted, without bellies, locks or trimmings and have the normal seasonal growth.

Up to three entries in each class will be accepted from each Exhibitor. Each fleece must be contained in its own bag or sheet, properly labeled with the Exhibitor's name and address and with the number in one class.

Entries must be dropped off at the wool section in the Wool tent by 9am on Show day.

PRIZES and AWARDS

Champion / Reserve Champion will be judged from classes

Prizes: First \$3, Second \$2.

THIOBENZOLE CHALLENGE CUP for the Best Fleece in the Show.

PGG WRIGHTSON WOOL sponsor \$25 for the Best Fleece in the Show.

LOGAN BROS. WAIKARI LTD Cup to be awarded to the unregistered breeder gaining most points.

WOOLS of NZ sponsor \$25 for Most Points gained by an Unregistered Breeder.

MALING AND CO. CHALLENGE CUP for most points in Wool Section.

NEW ZEALAND MERINO sponsor \$25 for the Most Points in the Wool section

M. GORDON CUP for Best Hogget Fleece.

NEW ZEALAND MERINO sponsor \$25 for the Best Hogget Fleece

L R FORRESTER MEMORIAL TROPHY for Best District Corriedale Fleece.

WOOLS of NZ sponsor \$25 for Champion Corriedale Fleece. `

MRS J FORRESTER CHALLENGE TROPHY - most outstanding Fleece

JOE INKSON MEMORIAL CHALLENGE CUP MESSRS P. & B. INKSON for Best Halfbred or Corriedale Ram Fleece.

PGG WRIGHTSON WOOL sponsor \$25 for the Best Merino Fleece.

Thank you to our sponsors:
PGG Wools, Wools of NZ, NZ Merino

OPEN - WHITE WOOL

Marshall: Andrew Rutherford Phone 021 505 806
Steward: Charlotte Rutherford

FINE WOOL SECTION

Class 250 Merino Ram
Class 251 Merino Ewe or Wether
Class 252 Merino Hogget

MID MICRON WOOL SECTION

Class 253 Mid Micron Ram
Class 254 Mid Micron Ewe Class
255 Mid Micron Hogget

STRONG WOOL SECTION

Class 256 Crossbred Ram
Class 257 Crossbred Ewe
Class 258 Crossbred Hogget

BLACK & COLOURED WOOL

Marshal: Amanda Bowes-Durand
Entry Fees: Members \$2.00. Non-members \$3.00
No late entries accepted.
Entries must be dropped off at the wool section in the Wool tent by 9am on Show day.

PRIZES

Champion Coloured Fleece - Black and coloured fleece
Reserve Champion Coloured Fleece - Black and coloured fleece
Mrs J Forrester- Challenge Trophy for most outstanding fleece

Class 260 Black & Coloured Mature Fleece - 31 micron and finer
Class 261 Black & Coloured Mature Fleece - 32 micron and stronger
Class 262 Black & Coloured Woolly Hogget Fleece - 30 micron and finer
Class 263 Black & Coloured Woolly Hogget Fleece - 31 micron and stronger
Class 264 Black & Coloured Shorn Hogget Fleece - 30 micron and finer
Class 265 Black & Coloured Shorn Hogget Fleece - 31 micron and stronger

CATTLE

Marshal: Alex McIntosh Phone 027 241 8104

ENTRY FEES:

Members \$5.00, Non-members \$8.00

Entries close 28 February 2026

GENERAL CONDITIONS

NAIT REQUIREMENTS:

Cattle will require the NAIT approved RFID tag.

ANIMAL HEALTH REQUIREMENTS:

All animals entered for showing or exhibiting must be from a current TB Clear Status Herd.

A copy of the current TB test certificate must be produced if requested.

PRIZES: - First \$50, Second \$40, Third \$30, Fourth \$20

SPONSORS: - Silver Fern Farms, North Canterbury Vets **Beef Heifer**

A class for beef heifers. Any heifers entered will be judged on farm. Judges and Marshal will travel around the farms before the show. Prizes will be presented in conjunction with the Hogget Competition following the show.

Class 300 Beef Heifers Born between June 2024 and June 2025.

PET DOGS

Marshal: Jessica Kirkland

Entry fee: Members \$2, Non-members \$3

Entries close Monday 16 March 2026. Late entries accepted until 10.00am on show day provided payment is made to the Marshal at \$5.00 per class entry.

Prizes: Lots of prizes to be won. The Marshal has the discretion to distribute prize money as specified in the Conditions of Entry.

Judging commences at 10.30am.

Dogs are to be on a lead at all times within the show ground. No dogs at any time in the marked off areas around horses, sheep and food areas. Please clean up after your dog and dispose of waste in the marked rubbish containers. Dogs are the responsibility of the owners at all times. It is recommended that all animals are registered and have current, up to date vaccination and worming certificates.

All exhibitors must be with their pets at time of judging. Children must be able to control their dog.

Limit of one pet per exhibitor, all animals are expected to be at the section at start time of the class.

Sponsors:

Hawarden Gym, Hynds Amberley, The Star Hotel and Masterpet

JUNIOR (8 years and under)

To be held after Fun Dog classes at 11am

Class 320 Obedience

You will be required to demonstrate knowledge about your dog and commands/skills

Class 321 Agility

You will be required to run your dog through a basic course

INTERMEDIATE (9-15 years)

Start time 10.30 am

Class 322 Obedience

You will be required to demonstrate knowledge about your dog and command/skills

Class 323 Agility

You will be required to run your dog through a basic agility course

OPEN (16 years and over)

Start time 10.30am

Handler of dog aged 16 years and over, including adults

Class 324 Obedience

You will be required to demonstrate knowledge about your dog and command/skills

Class 325 Agility

You will be required to run your dog through a basic agility course

FUN DOG

Start time 11.00am

Open to all ages

A pet dog photo booth will be available for photos of you and your pooch.

Bring a photo of your dog for the photo wall with your name and number on the back and go in the draw to win your dog a hamper. Class 326 Dress it up

Owners of any age are invited to dress up themselves and their dog as a dynamic duo/pair or look alike.

Class 327 Barkiest Dog

Owners of any age. Will your dog have the loudest bark on command?

HANDY DOGS

Marshal: Jack Ramsay

No entry fee

Heading dogs and Huntaways

OPEN and MAIDEN classes will take entries on the day.

Class 330 Open Heading dog

Class 331 Maiden Heading dog

Class 332 Open Huntaway

Class 333 Maiden Huntaway

HOME PRODUCE

Marshal: Elysia Churchward - 027 728 5937

FREE ENTRY for all exhibitors.

Hawarden Hall will be open for entries from Friday evening from 6.30pm - 8pm, and Saturday from 7.00am - 9.00am

If you are dropping off on Friday evening, all exhibits must be in an airtight container and clearly labelled with class and name. Containers will be placed under the tables for collection later. Entries must be placed before 9.00am and must not be removed until 4.00pm. Judging commences at 9.15am and the Hall doors will be closed until approximately 12 midday. All exhibits under this section must be bona-fide home-made or produced.

The late MRS S.H. FOSTER CHALLENGE TROPHY is awarded for most points in open section.

Kate Boyd sponsors a special prize

MRS C.E. ANDERSON CHALLENGE CUP is awarded for most points in 9-12 years section.

Kate Boyd sponsors a special prize

MRS G. HARTNELL MEMORIAL CUP is awarded for most points in 5-8 years section.

Kate Boyd sponsors a special prize

Sponsors: Hawarden Four Square, Bashers ITM, Lee Lamb, Louise Rickerby, Little Vintage.

OPEN

All ages can enter

BAKING

Class 397 Sourdough bread

Class 398 Uncooked slice

Three pieces

Class 399 Raw food slice

Three pieces

Class 400 Cooked slice

Three pieces

Class 401 Scones

Three, any variety

Class 402 Savoury muffins

Three muffins

Class 403 Sweet muffins

Three muffins

Class 404 Pikelets

Three

Class 405 My epic failure

Anything you have baked for the show and it failed.

MEN IN THE KITCHEN

Little Vintage sponsors this section.

Class 406 Favourite cake

Class 407 Muffins

Three, any variety

Class 408 Biscuits

Three, any variety

CAKES

Class 409 Banana cake

Plain icing

Class 410 Carrot cake

Plain or cream cheese icing

Class 411 Sultana cake

Class 412 Chocolate cake

Plain icing

Class 413 Rich Fruit cake

Christmas style, not iced

Class 414 Loaf, any variety

BISCUITS

Class 415 My favourite biscuit

Three, not iced

Class 416 Chocolate chip biscuit

Three biscuits

Class 417 Afghan biscuit

Three biscuits

Class 418 Shortbread

Three pieces

Class 419 Gingernuts

Three biscuits

SAVOURY

Class 420 Sausage roll

DESSERT

Class 421 Brownie

One serving

Class 422 My favourite dessert

One Serving

PRESIDENT'S CHOICE

The Presidents will sponsor a special prize to this class.

Class 423 What's for Smoko? Smoko

tin for one.

IN THE PANTRY

Class 424 Six fresh eggs

Class 425 Berry jam

One jar

Class 426 Stone fruit jam

One jar

Class 427 One jar of Marmalade

Class 428 Jelly jam

Any variety or blend, one jar

Class 429 Tomato Relish

One jar

Class 430 Relish, any other variety

Class 431 Pickle

One jar

Class 432 Chutney

Any variety
Class 433 Sauce, Tomato
One bottle
Class 434 Sauce, any other variety
One bottle
Class 435 Bottled fruit, any variety
One Jar
Class 436 Any other preserve
Class 437 Homemade Muesli
One Jar

JUNIOR COOKERY

All home made by exhibitor

5-8 years

Class 438 Homemade Biscuit decorated as 'On the Farm'
Class 439 Lolly cake
Three pieces
Class 440 Muffins
Any variety, three
Class 441 Homemade pizza
One wedge
Class 442 Healthy Lunch box for one

9 - 12 years

Class 443 Lolly cake
Three pieces
Class 444 Muffins, any variety
Three
Class 445 Favourite biscuit
Three
Class 446 Any cake, decorated as 'On the Farm'
Class 447 Homemade pizza
one wedge
Class 448 Presidents Choice - What's for Smoko?
Theme - 'This Rural Life'. Smoko tin for one.
The Presidents will sponsor a special prize to this class

13 - 16 years

Class 449 Chocolate cake
Plain icing

Class 450 Muffins, any variety

Three

Class 451 Favourite biscuit

Three

Class 452 Favourite slice

Three pieces

Class 453 Any cake, decorated as 'On the Farm'

Class 454 Lolly cake

Three pieces

Class 455 Homemade pizza

One wedge

Class 456 Presidents Choice - What's for Smoko?

Theme - 'This Rural Life'. Smoko tin for one

The Presidents will sponsor a special prize to this class.

Preschool - under 5 Years

Class 457 Decorated Gingerbread

Theme 'On the Farm' e.g. tractor, animal, farmer etc.

Class 458 Decorated Biscuit

Theme 'On the Farm' eg tractor, animal, farmer etc. Biscuit can be bought

Class 459 Healthy lunch box for one

FLOWERS

Marshal: Nicki Van der Klei, phone 027 260 1900

NO ENTRY FEES.

Hawarden Hall will be open for entries from Friday evening from 6.30pm - 8pm, and Saturday from 7.00am - 9.00am

No entries will be accepted after 9.15am Saturday morning

Judging commences Saturday 9.45am and the Hall doors will be closed until approximately 12 midday.

All exhibits to be grown by exhibitor, except in Decorative Classes.

There will be green bottles available for Cut Flower Sections

Exhibits can be removed after 4pm on Show Day.

Exhibits left in the hall after 5.30pm Show Day will be discarded.

Supreme Exhibit receives McPherson Tartan Sash.

CUPS AND TROPHIES AWARDED FOR MOST POINTS

Hawarden/Waikari Garden Club 40th Jubilee Silver Salver Tray and Voucher for Most Points in Roses

2025 Winner: Mandy Rutherford

Dr Alan Meikleham Memorial Challenge Cup and Voucher for Most Points in Dahlias

2025 Winner: Derek McFadden

Miss K Quigley Challenge Cup and Voucher for Most Points in Cut Flowers classes

2025 Winner: Jean & Winton Dalley

Mrs J L White Cup and Voucher for most points in Open Decorative

2025 Winner: Roslyn Harris

Miss K Quigley Challenge Cup for most Points in Novice Decorative

2025 Winner: Jack Philp

Mrs AH Black Challenge Cup and Trophy for most points in Children's Decorative 10-13 years

2025 Winner: Ella Dorgan

Most points in Children's Decorative 7-9years

2025 Winner: Margot Rutherford

Most points in Children's Decorative 5-6years

2025 Winner: Lily Harris

Most Points in preschool classes

2025 Winner: Flo Millar

Champion Blue Rosettes Awarded to:

Most Outstanding Exhibit Roses Section

2025 Winner: Jean & Winton Dalley

Most Outstanding Exhibit Dahlias Section

2025 Winner: Lorraine Dalton

Most Outstanding Exhibit Cut Flowers Section

2025 Winner: Jemima Savage

Most Outstanding Decorative Exhibit (judged and selected from all Decorative Sections)

2025 Winner: Roslyn Harris

Tartan Sash Awarded to Supreme Exhibitor

2025 Winner: Roslyn Harris

SPONSORS

Thank you to Rangiora McAlpine Mitre 10 Mega who has so generously provided vouchers for prize winners in Decorative Sections
Fi's Flowers 'n' Art

ROSES

Classes may be divided by Judge if necessary

Class 460 Rose, Large Bloom, One Flower Only (No Buds)

Class 461 Rose, Small Bloom, One Flower Only (No Buds)

Class 462 Rose, Old Form, One Stem.

Class 463 Collection of Roses, Four Different Species

Displayed together in one container

Class 464 Rose, Floribunda, Large Blooms, One Stem

Class 465 Rose, Floribunda, Small Blooms, One Stem

Class 466 Rose Miniature, One Stem

Class 467 Any fragrant rose

Most Outstanding Exhibit - Roses

DAHLIAS

Classes may be divided by Judge if necessary.

Class 468 One Medium Decorative Dahlia (155mm to 200mm).

Class 469 One Small Decorative Dahlia (115mm to 155mm).

Class 470 One Miniature Decorative Dahlia (50mm to 115mm).

Class 471 One Medium Cactus, Semi-Cactus Dahlia (155mm to 200mm).

Class 472 One Small Cactus, Semi-Cactus Dahlia (115mm to 155mm).

Class 473 One Water Lily Dahlia.

Class 474 One Ball Dahlia

Class 475 Three Pompom Dahlias

Class 476 One Giant Decorative Dahlia (250mm or over)

Class 477 Collection of Dahlias (under 155mm)

Three different species displayed together in one container

Class 478 Any Dahlia not mentioned in Schedule.

Most Outstanding Exhibit – Dahlia

CUT FLOWERS

Classes may be divided by Judge if necessary.

Class 479 One Delphinium

Class 480 One Pelargonium and / or Geranium single

Class 481 One Geranium Double

Class 482 Three Petunias

Class 483 Any Sunflower

Class 484 Three Asters

Class 485 Three African Marigolds
 Class 486 Three French Marigolds
 Class 487 Three Pansies or Violas
 Class 488 One Dianthus or Carnation
 Class 489 One stem Michaelmas Daisy
 Class 490 Fuchsia, Single, One Stem
 Class 491 Fuchsia, Double, One Stem
 Class 492 Three Daisies, Any Colour.
 Class 493 Collection of Cut Flowers
 Three different species displayed together in one container
 Class 494 Collection of New Zealand Natives
 Three different species displayed together in one container
 Class 495 Hydrangea, One Head
 Class 496 Hydrangea, Autumn Coloured, One Head
 Class 497 Indoor Plant
 Class 498 Alstroemeria, One Stem

DECORATIVE WORK

Please use fresh flowers and/or foliage in exhibits
 No artificial flowers or foliage allowed
 Props are allowed where needed to complete and exhibit.
 Exhibits can measure up to approximately 50cm x 50cm, at their widest point (unless specified otherwise)
 No height restrictions
 If unsure please ring Flowers Marshal Nicki Van der Klei 027 260 1900.

Decorative sections are based around the chosen theme for this year's Show
 "This Rural Life"

Most Outstanding Decorative Exhibit sponsored by Fi's Flowers N Art

Men's Section

Class 500 Man's best friend
 Use any cut flower and foliage

OPEN

All exhibits must include fresh flowers and/or foliage where specified
 Class 501 Hats off to Farm life
 Class 502 Red morning, shepherds warning
 Class 503 Embrace the elements - wet or dry

NOVICE

Novice is open to persons who have not won more than three first prizes when there are three or more entries in a class.

If unsure please speak to Marshal - Nicki Van der Klei 027 260 1900

All exhibits must include fresh flowers and/or foliage where specified

Class 504 Hats off to Farm life

Class 505 Red morning, Shepherds warning

Class 506 Embrace the elements - wet or dry

Most points Novice Decorative

10 - 13 years

Class 507 Boots n all

Exhibit can measure up to 50cm wide - any material - no height restrictions

Class 508 Hats off to Farm life

Class 509 Picnic Posy

Most points 10-13yrs

7 - 9 years

Class 510 Boots n all

Exhibit can measure up to 50cm wide - any material - no height restriction

Class 511 Hats off to Farm life

Class 512 Picnic Posy

Children's Decorative 7-9 years

5-6 Years

Class 513 Boots n all

Exhibit can measure up to 50cm wide - any material - no height restriction

Class 514 Picnic Posy

Children's Decorative 5-6 years

Preschool

Class 515 Gumboot art

Use flowers, colour and decorate.

Most points - Preschool

Marshal: Brona Youngman 03-314-4214 / 021-026-02821

Venue: Hawarden Hall Supper Room

No Entry Fees

Hawarden Hall will be open for entries from Friday evening from 6.30pm - 8pm, and Saturday from 7.00am - 9.00am

No entries will be accepted after 9.15am Saturday morning

Judging Commences 9.30 a.m. and the Hall doors will be closed until approximately 12 midday.

All exhibits to be grown by the exhibitor.

Exhibits must NOT be removed before 4.00 p.m. Produce can be left and will be donated to Waikari Hospital.

Big thank you to our amazing sponsors:

Rangiora Mitre 10 MEGA

Sentinels Group Seeds

MRS E.M.COWIE CHALLENGE CUP for the exhibitor gaining MOST POINTS in the Fruit and Vegetable Section.
2025 Winner: Winton Dalley

THE CHRISTCHURCH PRESS CO. CHALLENGE CUP for the exhibitor gaining MOST POINTS in Vegetable Classes.
2025 Winner: Winton Dalley

RANGIORA MITRE 10 MEGA, best exhibit in the Potato Classes.
2025 Winner: Peter Croudley

RANGIORA MITRE 10 MEGA, Gift Voucher for the best exhibit in the Onion Classes.
2025 Winner: Winton Dalley

SENTINELS GROUP SEEDS, Growers of localised land raised seed varieties, donates a selection of seeds to the best exhibit in the bean and tomato sections.
- SENTINELS SEEDS BEST TOMATOES
- SENTINELS SEEDS BEST BEANS

Trophy for The Heaviest Pumpkin, Open.
Trophy for The Heaviest Pumpkin, Children.
Heaviest Marrow, Open.
Heaviest Marrow, Children.

Best Potatoes in a Bucket, Children.
CHILDREN'S CUP for Most Points in Children's section.

MOST OUTSTANDING EXHIBIT: Ribbon awarded to Entrant for best Exhibit in the Fruit and Vegetables classes.

YOUNGMANS CUP: Awarded to the Grower of the year over 9 years old.

SUPREME EXHIBITOR AWARD: Awarded to Entrant with MOST ENTRIES overall.

OPEN FRUIT

Class 530 Three Apples, Red
Any variety.
Class 531 Three Apples, Green
Any variety
Class 532 Three Pears
Any variety
Class 533 Three Other Fruit
Any variety.

Class 534 An Arrangement of Fruit on a Plate, Tray or in a Basket

Class 535 Black Boy peaches

Class 536 Heaviest Quince

OPEN VEGETABLES

Class 537 Red Table Potatoes, Three

Class 538 White Table Potatoes, Three

Class 539 Purple Table Potatoes, Three

MITRE 10 MEGA - Best Potatoes

Winner from classes 537, 538, and 539

Class 540 Carrots, Three

Class 541 Parsnips, Three

Class 542 Brown Onions, Three

Class 543 White Onions, Three

Class 544 Red Onions, Three

Class 545 Yellow Onions, Three

MITRE 10 MEGA - Best Onions

Winner from classes 542, 543, 544 and 545

Class 546 Long Beetroot, Three

Class 547 Turnip Rooted Beetroot, Three

Class 548 Peppers, Three

Any colour

Class 549 Leeks, Three

Class 550 Green Silver Beet, Three Stalks

Class 551 Red/ Yellow Silver Beet, Three Stalks

Class 552 Green Beans, Six Pods

Any colour

Class 553 Yellow Beans, Six Pods

Class 554 Scarlet Runner Beans, Six Pods

SENTINEL GROUP SEEDS - Best Beans

Winner from classes 552, 553 and

554 Class 555 Cucumber, One

Telegraph, Lebanese.

Class 556 Apple Cucumber

Class 557 Rhubarb, Three Stalks

Class 558 Tomatoes, Three Standard Size

Calyx in

Class 559 Tomatoes, Three Cocktail Size

Calyx in

Class 560 Best Tasting Tomato Competition Calyx in

SENTINEL GROUP SEEDS - Best Tomatoes

Winner from classes 558, 559 and 560

Class 561 Courgettes, Three

Class 562 Squash - Patty pan

Class 563 Pumpkin, One

Suitable for the table

Class 564 Chillies, Three

Class 565 Aubergine

Class 566 A Collection of Herbs in a Jar

Class 567 Pot of Microgreens

No bigger than 30cm width

Class 568 Arrangement of six varieties of Vegetables on a tray

Several varieties of vegetables e.g. beans, to be counted as one kind

Class 569 Collection of Vegetables, not more than twelve kinds

Several varieties of vegetables e.g. beans, to be counted as one kind. Class 570 Any Other Vegetable Not already in schedule.

Class 571 Unsightly Vegetable, One

Any disfigured, distorted eyesore will do

Class 572 Sweetcorn, Three Cobs

Partially stripped

Class 573 Tallest Maize plant - Dry land

Entrants need to enter entire plant for measuring on a day or contact the Marshal for on farm measuring.

Class 574 Tallest Maize plant - Irrigated land

Entrants need to enter entire plant for measuring on a day or contact the Marshal for on farm measuring.

Class 575 Tallest corn plant - homegrown

Entrants need to enter entire plant for measuring on a day or contact the Marshal for on farm measuring.

CHILDREN'S SECTION

Class 576 Green Haired Monster

Any sort of monster or monster face topped with live green hair. Hollow out a fruit or vegetable or use an empty egg, fill it with cotton wool, sprinkle with cress or mustard seeds and wait for the hair to grow.

Class 577 Tomatoes, Three

Any variety or colour

Class 578 Pumpkin, One

Suitable for the table

Class 579 Potatoes Grown in a Bucket.

The potatoes will be tipped out and counted at school prior to the show.

Children's Best Potatoes in a Bucket Award

Class 580 Carrots, Three

Class 581 Silverbeet Leaves, Three

Any colour

Class 582 Green beans, three

Class 583 Yellow Beans, three

Class 584 Cucumber, One

Class 585 Any other Vegetable not already in schedule

Class 586 Best pot of Microgreens

No bigger than 30cm width

Class 587 Child under 7 years - Lego crossover

Theme: This Rural Life - Miniature garden grown on a shallow tray (meat tray with drainage, filled with soil), living seedlings as natural surroundings. Buildings, workers, machinery, out of lego.

Footprint not to be larger than 30cm square.

Class 588 Child over 7 years - Lego crossover

Theme: This Rural Life - Miniature garden grown on a shallow tray (meat tray with drainage, filled with soil), living seedlings as natural surroundings. Buildings, workers, machinery, out of lego.

Footprint not to be larger than 30cm square.

Class 589 Child over 7 years - Carving out of the Marrow

Theme - The nature around us.

HEAVIEST PUMPKIN OR MARROW

The Heaviest Pumpkin, Open

The Heaviest Pumpkin, Children

The Heaviest Marrow, Open

The Heaviest Marrow, Children

The Heaviest Pumpkin and Marrow Competition will be held on Show Day, outside the Fruit and Vegetable Section, on the grass outside the Hall.

All pumpkins and marrows must be at the Hall before 9.15am on Show Day.

Class 590 Open Marrow, The Heaviest

Heaviest Marrow - Open

Class 591 Open Pumpkin, The Heaviest

Heaviest Pumpkin - Open

Class 592 Children's Marrow, The Heaviest

Heaviest Marrow - Children

Class 593 Children's Pumpkin, The Heaviest

Heaviest Pumpkin - Children

Class 594 The Funkiest, The Grooviest and The Puniest,

Children's Pumpkin, any sort

YOUNG GROWER OF THE YEAR

Class 595 Under 9 Yrs

Grow vegetables from seeds or donated seedlings. Photo diary to be presented at the show with this class.

Class 596 Over 9 Yrs
Growing vegetables from seeds or donated seedlings. Written diary with photos to be presented at the show with this class.

SCARECROW

Class 597 Scarecrow - Mini me
Children should create a scarecrow for the garden, using environmentally friendly materials, no plastics.

PHOTOGRAPHY

Marshal: Lucy Hunter-Weston, Phone: 03 314 2082 Email: lucyhunterweston@me.com

Steward: Tina Longman, Phone: 027 473 1955

Delivery: Lucy Hunter-Weston 181 Dalmeny Road, Hawarden

R.D. or Hawarden Four Square, 1 High St, Hawarden NO ENTRY

FEES.

All photographs, with a correctly completed official entry form to be posted or handed to the above persons NO LATER THAN FRIDAY 13th MARCH 2026 - for judging.

Late entries may be displayed but will not be judged.

ALL PHOTOGRAPHS to have exhibitor's name and the class number printed clearly on the back.

All Prints are to be mounted on paper or card with spaces around the edges 1cm or more for presentation purposes and for pinning up.

NO GLASS and NO FRAMING

A maximum of 5 entries per class, per exhibitor in all sections.

The same photograph cannot be entered in more than one class.

Exhibits may not be removed until 4.30pm on Show Day.

If you are unable to collect images yourself, please arrange for someone to collect OR include a self-address postage bag so that I can post them back to you.

Trophies and Prizes

JO BOOKER MEMORIAL CUP for first prize in 'Photo Series' class, as well as \$50 cash.

2025 Winner: Jack Philp

WATERMARK PHOTOGRAPHY TROPHY for most points overall.

2025 Winner: Jack Philp

MR J. COSGROVE CHALLENGE CUP for the best Sport in Action Photograph.

2025 Winner: Bradley White

YATES FAMILY CUP for the most outstanding photograph.

2025 Winner: Charlotte Rutherford

STACY SQUIRES Trophy for the Intermediate Class.

2025 Winner: Jack Philp

LONGMAN-COSTELLO TROPHY - most points in under 13 section

2025 Winner: Maddison Dobbs

SUPREME EXHIBITOR – PHOTOGRAPHY – Tartan Sash

2025 Winner: Jack Philp

TINA LONGMAN SPECIAL PRIZE - for most outstanding in entries under 13

2025 Winner: Ellie Frame

OUR COMMUNITY - online competition

2025 Winner: Sam Norton

PRESIDENTS' SPECIAL PRIZE - This Rural Life

Sponsored by Kate and Quintin Boyd

2025 Winner: Sam Norton

WATERMARK 'ALL 'SCAPES' SPECIAL PRIZE - Donated by Watermark Photography

2025 Winner: Gemma Costello

Printing costs sponsored by Mt Bengier Ltd

Print Sizes

6 x 4 inches 10 x 15 cm

5 x 7 inches 12.7 x 18 cm

8 x 10 inches 20 x 25 cm (or 8 x 12 inches)

If you have any queries about any of these classes, please contact Lucy.

OPEN - ANY AGE

Class 600 This Rural Life

These images will be judged ONLINE and the top 10 images will be printed and displayed on the day and on the Hawarden Show Facebook page.

Email your images to lucyhunterweston@me.com in high resolution. If you have any difficulties contact Lucy to help you out.

First prize is \$50 - sponsored by Watermark Photography

Presidents' special prize awarded for this class.

Class 601 Photographers' Choice

Any size

Class 602 Landscape, Cityscape or Seascape

8x10 or larger

Class 603 "The Joys of Farming"

6x4in or 5x7in

Class 604 Action/Sporting

6x4in

MR J COSGROVE CHALLENGE CUP

Class 605 Photo series: A series of 4 photos telling a story or action sequence

Please mount 4 on backing card, 2 across and 2 down (6x4in) each print

JO BOOKER MEMORIAL CUP

Class 606 Flowers and Gardens

6x4in

Class 607 Portrait - Single or group

6x4in or 5x7in

TEENAGERS - 13 - 18 YEARS

Class 608 Photographers' Choice

6x4in or larger

Class 609 Landscape, Cityscape or Seascape

Winner will have their image displayed in a frame to keep (8x10in)

Class 610 The Joys of Farming

6x4in

Class 611 Flowers and Gardens

6x4in

Class 612 Portrait - Single or Group

6x4in

WATERMARK 'ALL-'SCAPES' SPECIAL AWARD

STACEY SQUIRES TROPHY

CHILDREN - UNDER 13 YEARS

Class 613 Photographers' Choice Enlargement

Any size

Class 614 Landscape, Cityscape or Seascape

Any size

Class 615 Animal & Pets

6x4in

Class 616 Flowers & Gardens

6x4

Class 617 Portrait - Single or Group

6x4in

LONGMAN COSTELLO TROPHY

TINA LONGMAN SPECIAL PRIZE

Marshal: Tania Dickman phone 022 341 9702

Venue: Tin Shed No entry fees.

Entries will be received in the Tin Shed on Friday 20th March , 6.00 - 7.30 pm and will be open on Show morning from 7.45am until 9.00 am when the doors will be closed.

Judging starts at 9.15am on Show day.

Entries are not to be removed before 4.00pm Show day

All exhibits in this section must be the bona fide work of the exhibitor

Classes may be divided depending on number of entries, this will be the decision of the Marshal and Steward and is final.

AWARDS

THE MRS E B GLENDAY PLATE - For the most points overall

THE GLENIS MILLER MEMORIAL TROPHY for the most points in Handcraft section.

TARTAN SASH awarded to Supreme exhibitor

Sponsors

The Wallace Grommit Dale and Graeme Wensleydale Challenge Class is sponsored by J & T Farm.

Thank you to Phillipa Cameron for sponsoring some black knitting yarn in the Woolcraft section.

WOOLCRAFT

No synthetic fibers/yarns to be used unless specified.

Class 620 Handspun 4 ply wool

Class 621 Handspun 8 ply wool

Class 622 Art yarn, show us your beehives, lock spinning, etc
can use synthetic fibres/yarn as core or decorations in this class

Class 623 Any ply of wool showing us your dyeing skills and favorite colourways

Class 624 Woollen hat suitable for The Rural Lifestyle

Class 625 A pair of woollen foot warmers - can be booties, slippers, socks etc

Class 626 A baby's singlet - must be 100 percent wool with the label attached.

PATTERN SUPPLIED FOR THIS CLASS - available from Tania 022 341 9702, can be emailed also.

At the end of show day, the singlets will be donated to a cause chosen by the presidents Kate and Quintin Boyd - NICU Christchurch Hospital. Class 627 A woollen child's toy (must be wool) suitable for a child 4 years or younger.

Class 628 The Wallace Grommit Dale and Graham Wensleydale challenge.

You will be supplied with 150grams of carded Wensleydale wool to make anything of your choice.

Wool available from Tania / Jill Phone 027 220 6909.

Class 629 A crocheted item/article

Class 630 A knitted item/article

Class 631 A felted item/article

Class 632 Any woollen item or article not mentioned in this section

OTHER CRAFTS

Class 633 A sewn article or item suitable for kitchen use
Class 634 A bag suitable for The Rural Lifestyle any method of construction

Class 635 Embroidery, cross stitch, shashiko etc

Class 636 A handmade card

Class 637 A Christmas tree decoration suitable to be hung on the tree.
Class 638 A sculpture depicting The Rural Lifestyle any form or method can be used.

Class 639 A wooden item/article made by you.

Class 640 A pottery or ceramics article or item.

Class 641 Any other craft not mentioned in this section.

CHILDREN'S SECTION

Class 642 A handmade card suitable for any occasion.

Class 643 Art - theme The Rural Lifestyle any medium can be used.

Class 644 Show us your knitting/crochet skills.

Class 645 Felting wet or needle felting.

Class 646 Make a Christmas decoration.

Class 647 Any other craft not mentioned in this section.

Class 648 Decorate a pinecone.

CREATIVE WRITING

Marshal: Keri Zino - Phone 0274 221 655

Ages taken as age on Show Day.

Must be original pieces of written work

ENTRIES CLOSE THURSDAY 12th MARCH 2026

Entries emailed to: kz@hurunuicollege.school.nz

Delivered to: Hurunui College Office

Posted to: K Zino, 2 Tenterden Street, Hawarden 7348

Short Story / Prose

Short Story Competition for 2026 embraces the show theme of 'This Rural Life'

There are 2 options:

1) Write a humorous story or comic strip which includes the following phrase "Ahhhh this rural life!"

It can begin, end or be within your writing piece.

A visual may be used for inspiration (please include) Teachers may wish to use one funny visual for the whole class.

2) Write about your experience/feelings of living in our local rural area.

Focus on why you enjoy living here and what connects you to our Hurunui rural life.

Written submissions should be no longer than an A4 page and typed.

Class 700 6-7 years

Class 701 8-10 years

Class 702 11-13 years

Class 703 14-16 years

Class 704 Open: 17 years +

Poetry

Rural/Nature based subject matter

Can be rhyming or unrhyming

Should be no longer than an A4 page and can be handwritten or typed.

Class 705 6-7 years

Class 706 8-10 years

Class 707 11-13 years

Class 708 14-16 years

Class 709 Open: 17 years +

LEGO CONSTRUCTION

Marshal: Jemima Savage Phone: 022 670 2935

Sponsor: Kindly Sponsored by Dom Carpentry

- Age taken as age on Show Day.
- Entries can be placed in hall on Friday evening, between 7 - 8pm or Show Day morning before 9am. The Hall doors will then be closed for judging until approximately 12 midday.
- Entries should not be removed before 4pm on Show Day.
- All entries at exhibitor's risk (although cages will be placed around tables to help protect them).
- Entries must be of original design (not built to Lego manual design) and without adult input.
- All entries to be placed on a tray so they can be moved, and no more than 50cm x 50cm in size

PRE SCHOOL

Any original model of your design using Duplo.

Class 715 3-5 years

OPEN

Any original model of your design using small lego and following the appropriate theme for each class

The Theme for all classes is "THIS IS RURAL LIFE"

This is open to wide interpretation, what does living in this rural idyll mean to you?

Tying in with the Vegetable section, extra points will be awarded if you can include something living in your build, ie microgreens / seedlings. N.B. Our judge has a keen eye for detail!

Class 716 5-6 Years

Class 717 7-8 Years

Class 718 9-10 Years

Class 719 11-12 Years

Class 720 13 Years +

Class 721 Family category

Siblings and parents all involved in the same lego build.

CHILDRENS EVENT

Marshal: Keri Zino - Phone 0274 221 655

Entries close 10.30am

Judging 10.45am (competitors must be present to push or ride their bike)

NOTE Classes subject to change, based on the entry numbers

DECORATED BIKE COMPETITION

Class 722 Under 5 years

Class 723 5-7 Years

Class 724 8-11 Years

More points awarded to the children who decorate the bike themselves.

ART

Marshal - Mark Wilson. Phone: 0274266597

Steward - Richard Todd Free

Entry

ENTRIES OPEN TO CHILDREN AND ADULTS

Art can be sold on the day, no commission. Art can be dropped off the Friday morning before the show and collected after 4pm on Show day.